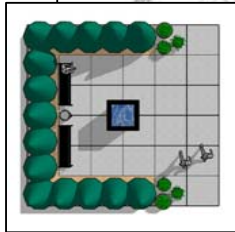
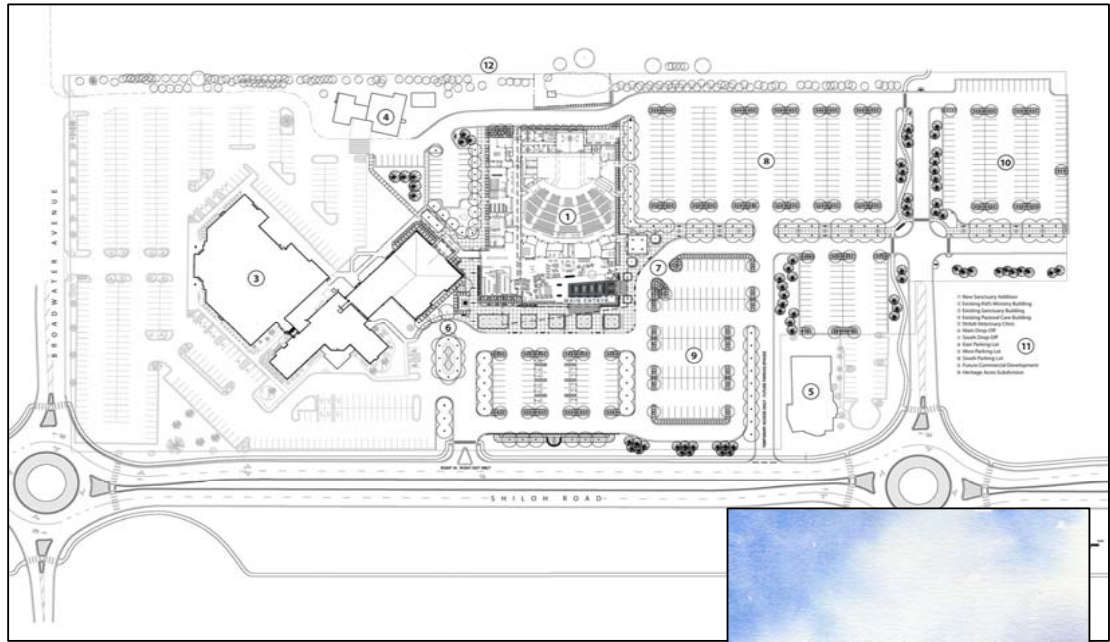
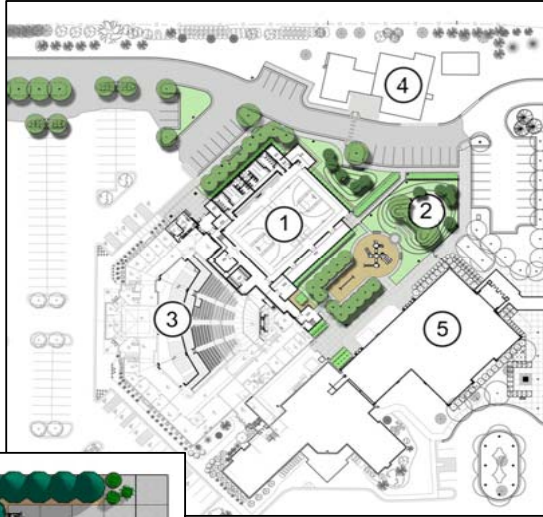


Projects

Faith Chapel
Site Development Plan
Billings, Montana



Owner
Faith Chapel
Broadwater & Shiloh Roads
Billings, Montana

Completion Date
2008

Project Cost
withheld at owner's request

Work Responsible For
100% of site & landscape design

Consultants
A&E Architects (Architecture)
Engineering Inc. (Civil)

Description
Foley Group completed site master planning, site design and construction documents for the Church's four phase expansion plan on 18.5 acres along the Shiloh Road Corridor in west Billings. Major elements of the planning process included building placement and orientation, parking & pedestrian circulation and compliance with the Shiloh Corridor Overlay District. The site design included development of several pedestrian spaces including a parking lot spine collector, arrival plaza and kid's ministry entries. Landscape design utilized large masses of native grasses creating a sea of calming grasses at the building entries. The parking lots were visually separated and shaded with three varieties of hardy deciduous trees. The site benches, flower planters, trash receptacles, lighting, banner posts and wayfinding signage were all integrated to reflect the contemporary nature of the new sanctuary structure.

